



C i v i l F E M

Installation Guide



CivilFEM Installation Guide

1.	Introduction.....	3
2.	Hardware and Software Requirements	4
2.1.	Platform and Operating Systems	4
2.2.	Graphic Card	4
2.3.	Minimum Requirements	4
2.4.	Recommended Hardware	4
3.	Installation of Marc.....	5
3.1.	Install MSC Licensing	5
3.2.	Install Marc.....	7
4.	Installation of CivilFEM	13
4.1.	License file	13
4.2.	CivilFEM Installation	13
5.	CivilFEM Licensing.....	18
5.1.	How to Obtain Your License File	18
5.2.	License Server Installation.....	19
5.3.	Floating Licenses on a License Server	22
5.4.	Borrowing Licenses.....	24
6.	Running CivilFEM	26
6.1.	Software Updates.....	26

6.2. Selecting the License with the Product Launcher	26
--	----

1. Introduction

Welcome to CivilFEM Installation Guide. User will find below step-by-step instructions to install CivilFEM which is the main program and then Marc software, needed for meshing and solving.

There are two different programs with their own installation process.

A typical installation on a Windows machine (choosing the default installation directory) installs CivilFEM in \Program Files\CivilFEM and Marc in \MSC.Software, located on the same drive as the operating system.

The capabilities of the Commercial version depend on the license, and may be seen at the product launcher once the product is installed.

The installation now has a wizard that launches both: MSC and CivilFEM installations:



2. Hardware and Software Requirements

2.1. Platform and Operating Systems

PLATFORM	OPERATING SYSTEM
Intel x64 / AMD64	Windows 10 (Creator's Update)

2.2. Graphic Card

- **Minimum:** OpenGL 3.1 and GLSL 1.4 compatible graphic card.
- It is advisable to have a 3D graphic card with updated **OpenGL** drivers.

2.3. Minimum Requirements

- **Administrator privileges** are required to install the software.
- Internet connection for software updates.
- **3 GB** space is needed in the hard disk for the installation of the software (1 GB for CivilFEM and 2 GB for Marc). Additional space is needed to work with the models (depending on the size of the models), but a minimum of 10 GB more free space is recommended to start working.
- A minimum of **8 GB of RAM** is recommended to properly work with this version.

2.4. Recommended Hardware

- To properly work with big models, **16 GB of RAM** or more are recommended.
- A primary SSD hard disk is recommended to install the software to improve the general speed.
- To have enough hard disk space to work with big models, a secondary hard disk of 1 TB or more is recommended.

3. Installation of Marc

To run CivilFEM, **Marc 2024.1** (MSC. Software) **must be installed** (any other version of Marc Mentat also works but these versions are recommended and fully supported). A license file for MSC licensing server should also be provided by your distributor.

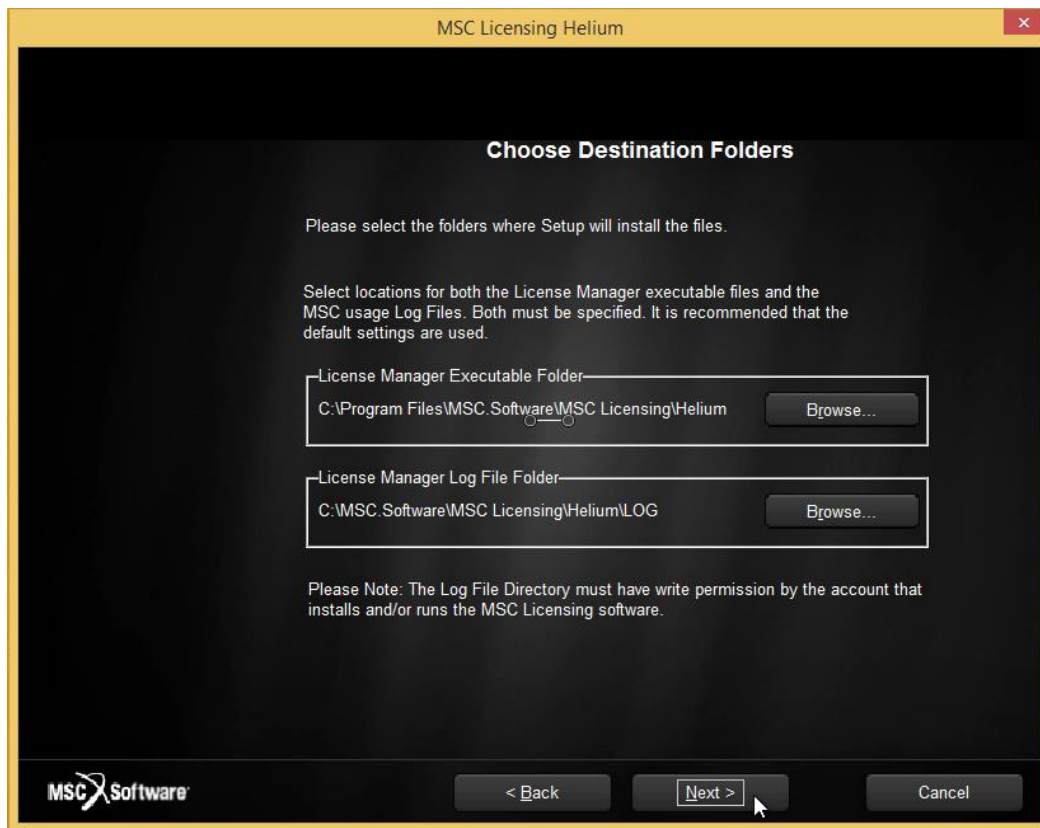
3.1. Install MSC Licensing

This step is for installing network licenses that can be shared across your local network and requires a network (non-nodelocked) license file. Even if you are not going to share the license in a network, if you have a network license file, this step is still required.

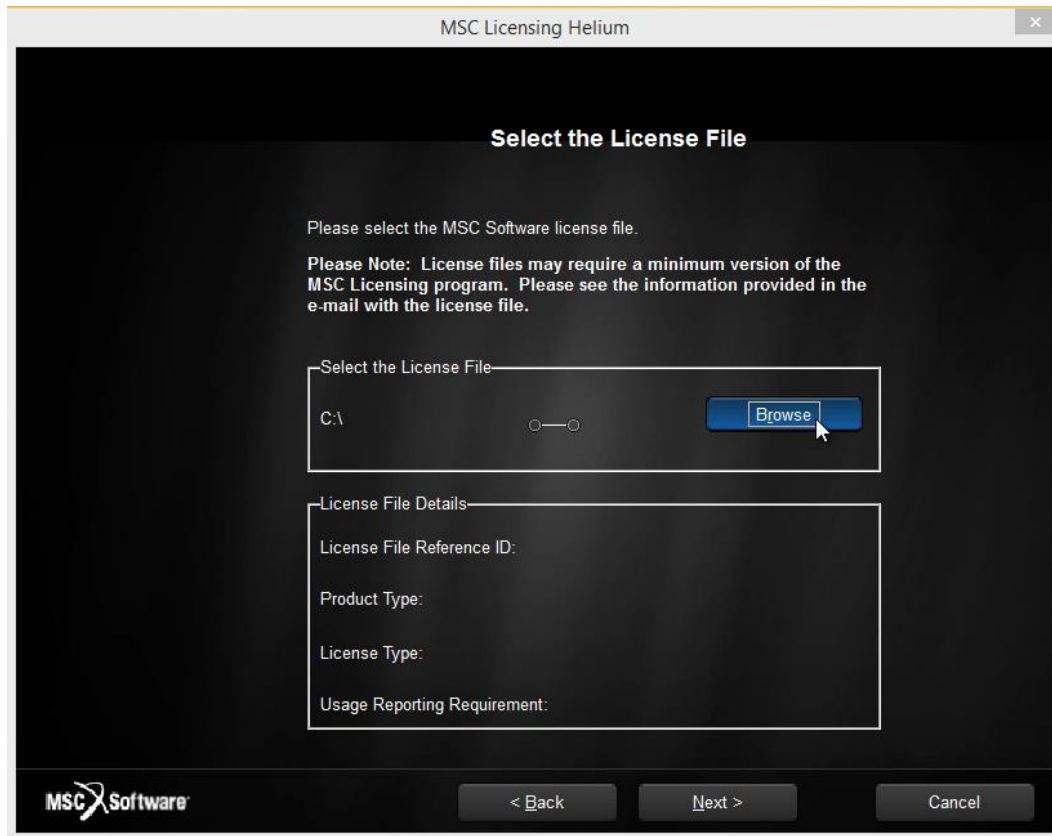
Run MSC Licensing executable, version 11.9 or above. A welcome screen will appear:



- Choose the installation folders or left the default ones:



- Browse for the provided MSC license file:



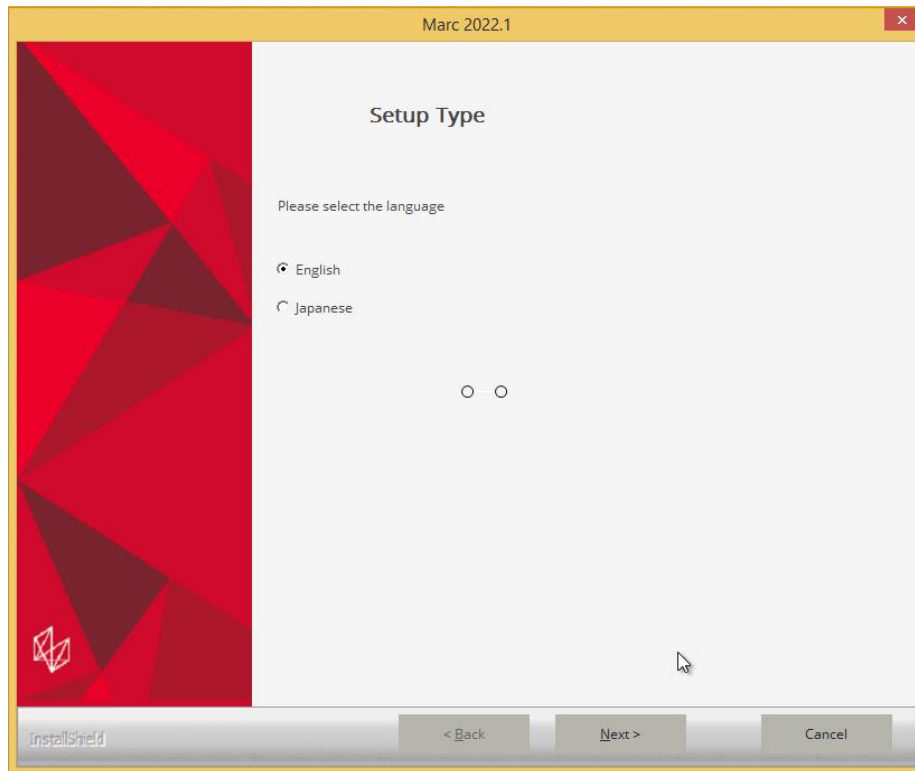
Click next and wait until the installation finishes.

Please, refer to the original MSC installation guide for more information: “**Marc and Mentat for Microsoft Windows Installation and Operations Guide**”.

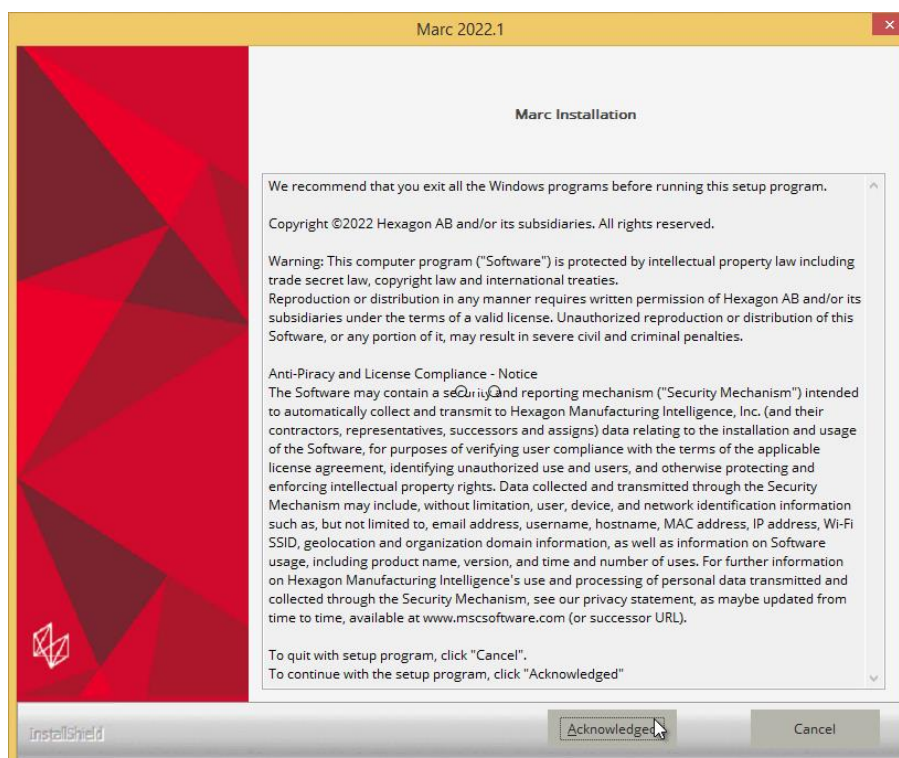
3.2. Install Marc

Run the Marc 2024.1 installation with administrator privileges.

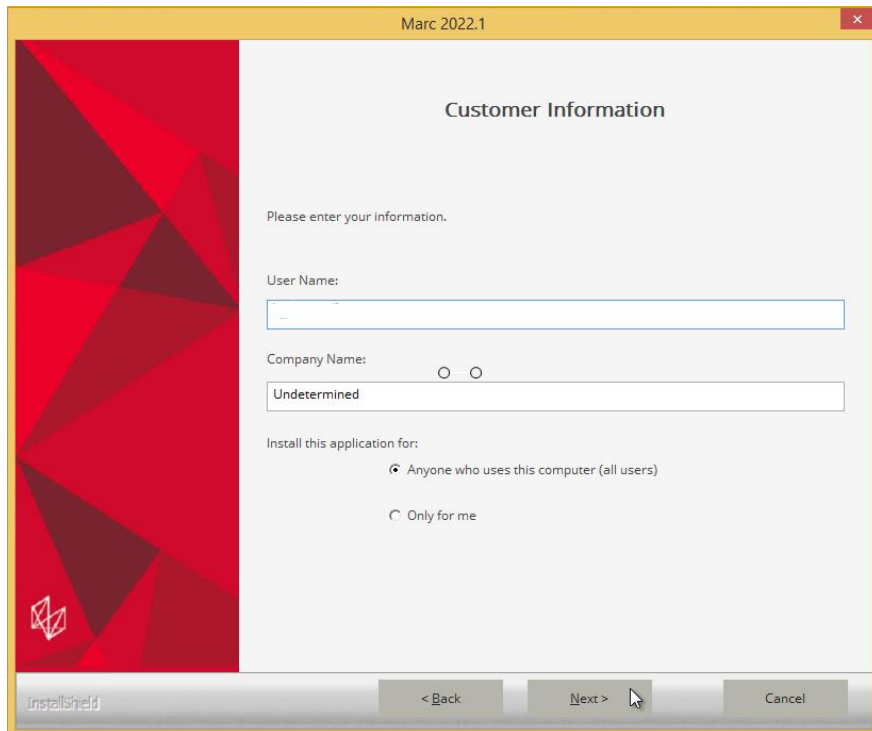
First select the language:



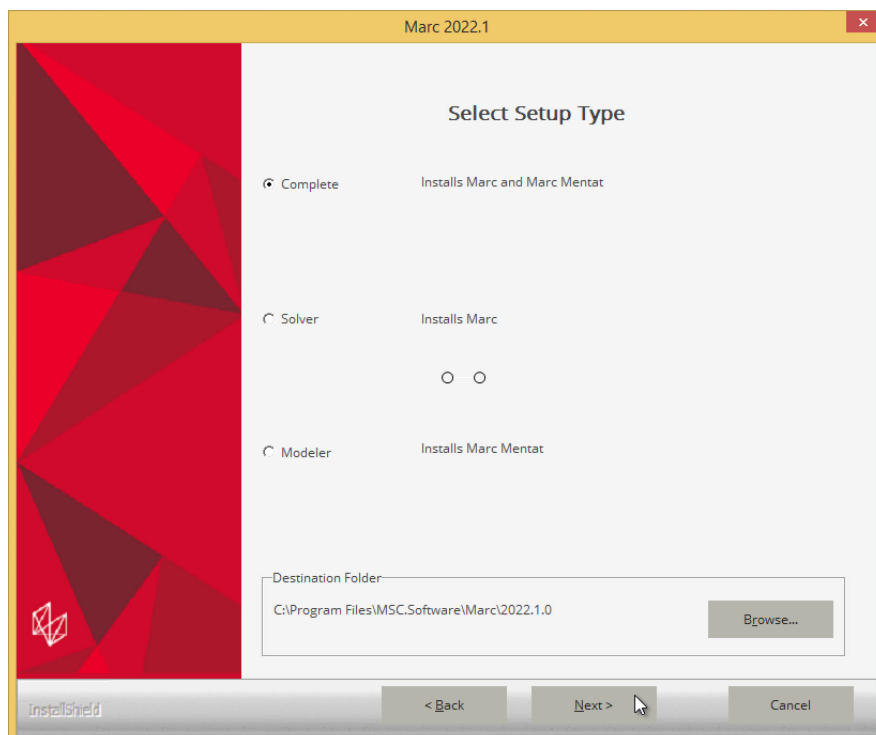
A welcome screen will appear, please accept to consent and continue with the Setup program:



- Select the user/s that will be able to use the installed application:

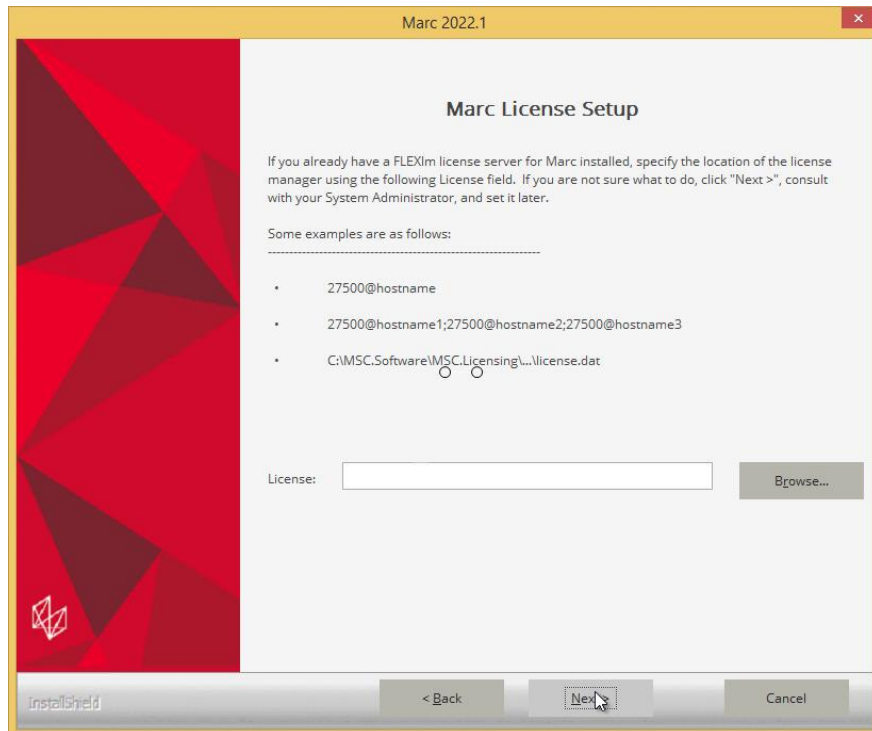


- Select “complete” for the installation type as Marc and Mentat are required by CivilFEM to solve and mesh. Keep track of the installation directory, as it will be needed later on to configure CivilFEM solver and mesher. We recommend to leave default values:

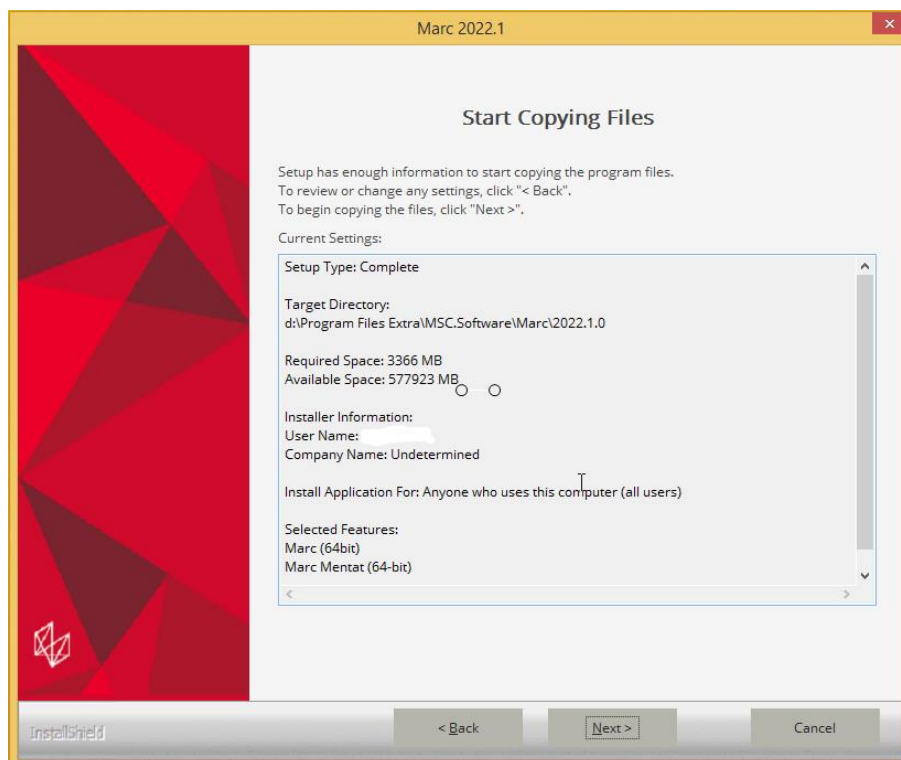


- Then you will need to configure the license.

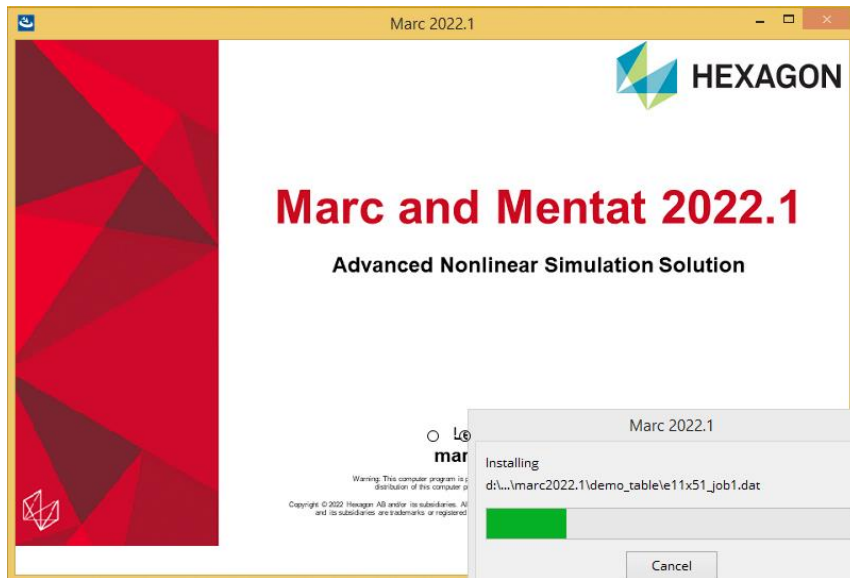
- As you already should have installed the MSC licensing software, provide now the server and port number where you installed it.



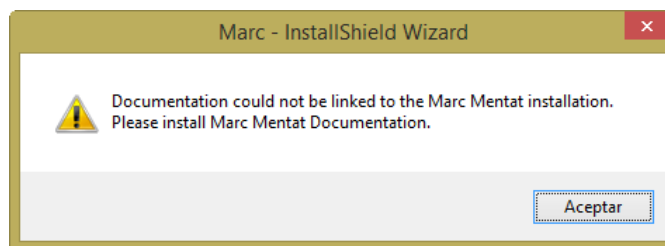
- Now the software is ready to install. Check the information provided and proceed with the installation if everything is fine:



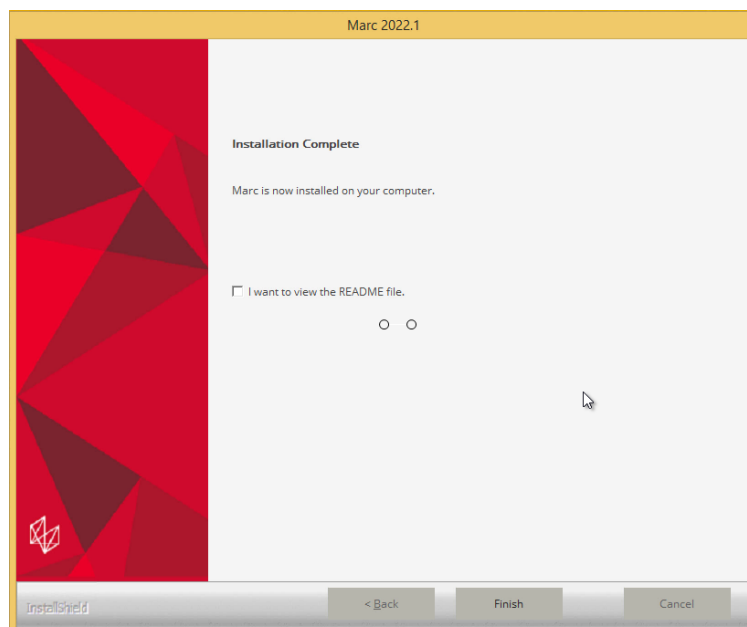
- Now program files will start to copy, just wait until Setup ends:



- A message about Marc Documentation will appear but this is not important as documentation is not needed to be installed, just accept and continue:



- The installation will show a completion message:



Please, refer to the original MSC installation guide for more information: “**Marc and Mentat for Microsoft Windows Installation and Operations Guide**”.

4. Installation of CivilFEM

4.1. License file

You need the licenses of CivilFEM powered by Marc. For **commercial licenses**, Ingeciber provides you the licenses with the information of your computer. In this case, you will receive a:

- **Network Floating License**, which requires a license server installation (intended for the usage in computers of a local network).

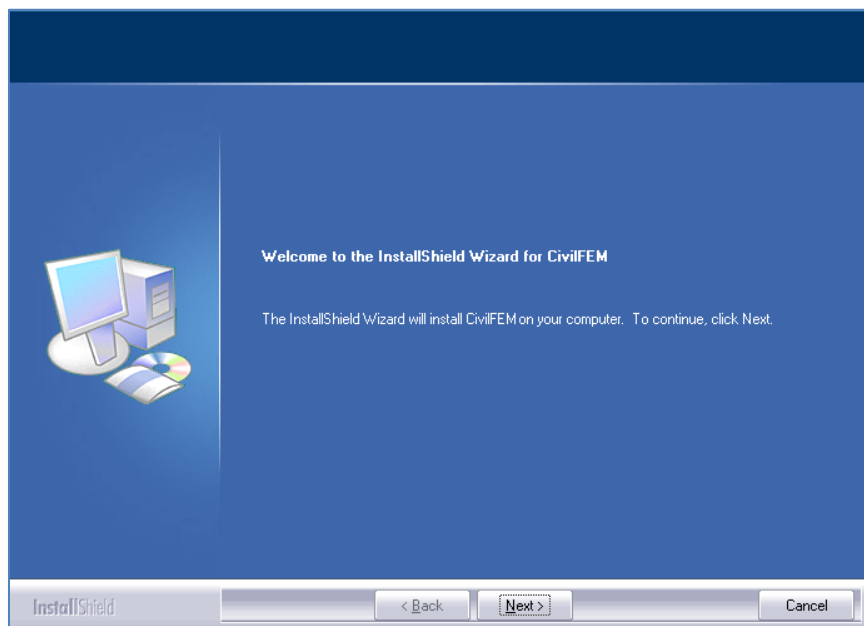
For virtualized environments a security dongle is required, please contact your distributor for more information.

In order to attach your license to a specific computer to a specific server (for a network floating license), please download the [CivilFEM Get Host ID Tool](#) (click on this [link](#)), or alternatively the [LM-X Config Tool](#) (click on this [link](#)), and run the tool in the machine in which you will have your CivilFEM license, and generate the **Host-Id information file** with it. Then, send the generated file to secretariat@ingeciber.com and the CivilFEM license file will be sent back to you.

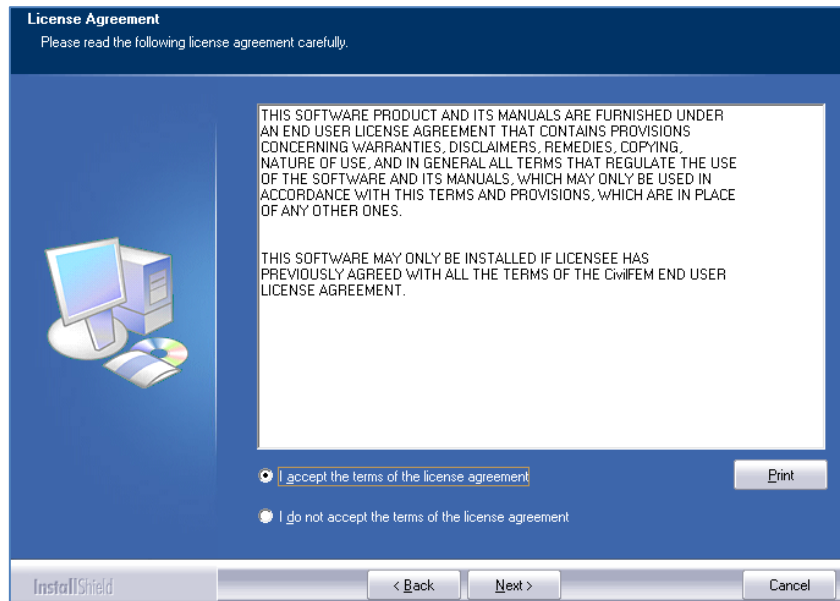
4.2. CivilFEM Installation

Please download CivilFEM and then run the installation file.

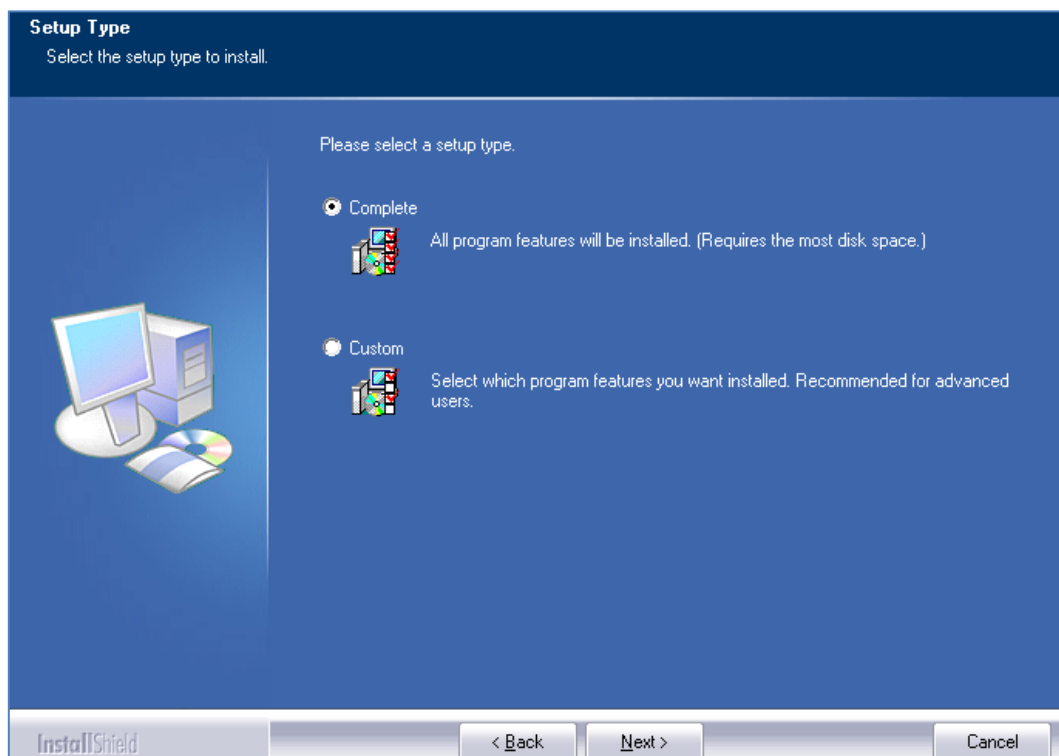
- a) Begin installation and click **Next**.



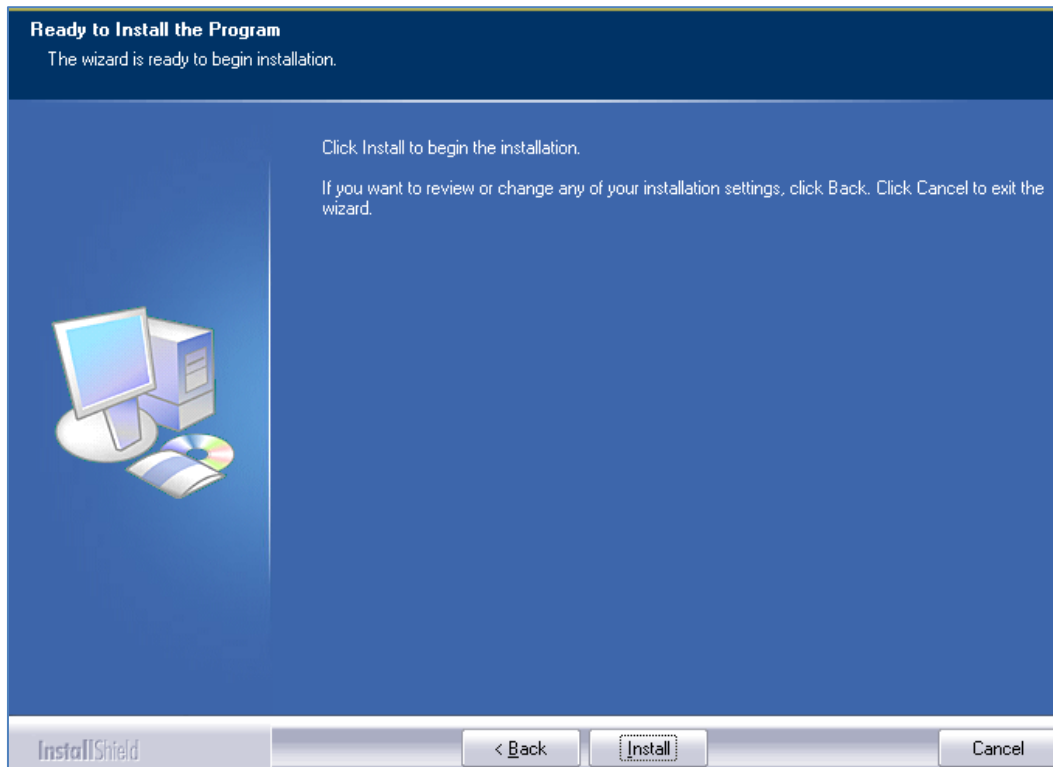
- b) **Accept** the License Agreement and click **Next**.



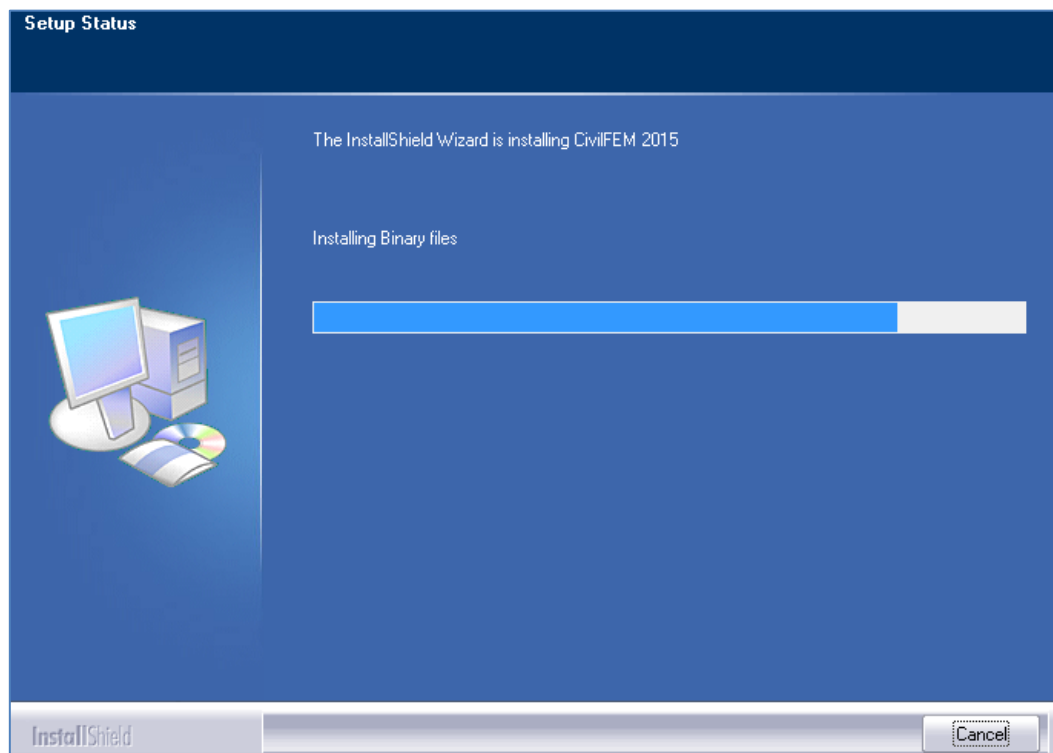
- c) Select a setup file: **Complete** (full components installed), **Custom** (options for installation folder, include or not software documentation will appear and borrow license utility). Then click **Next**.



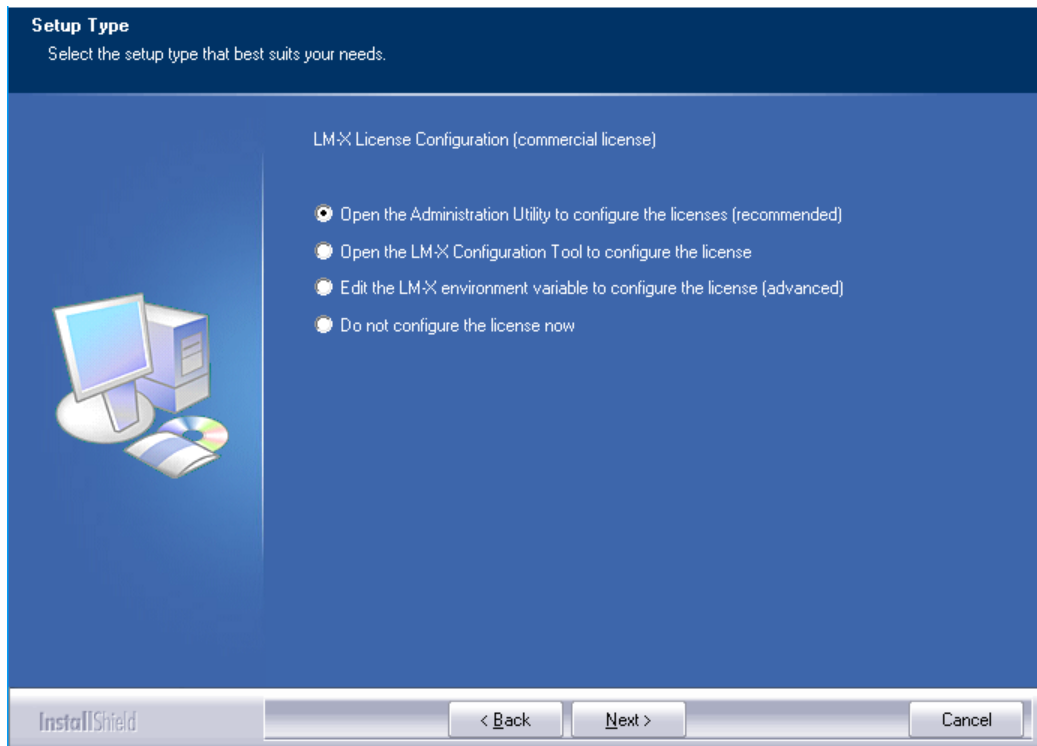
- d) Click **Install** to begin the installation.



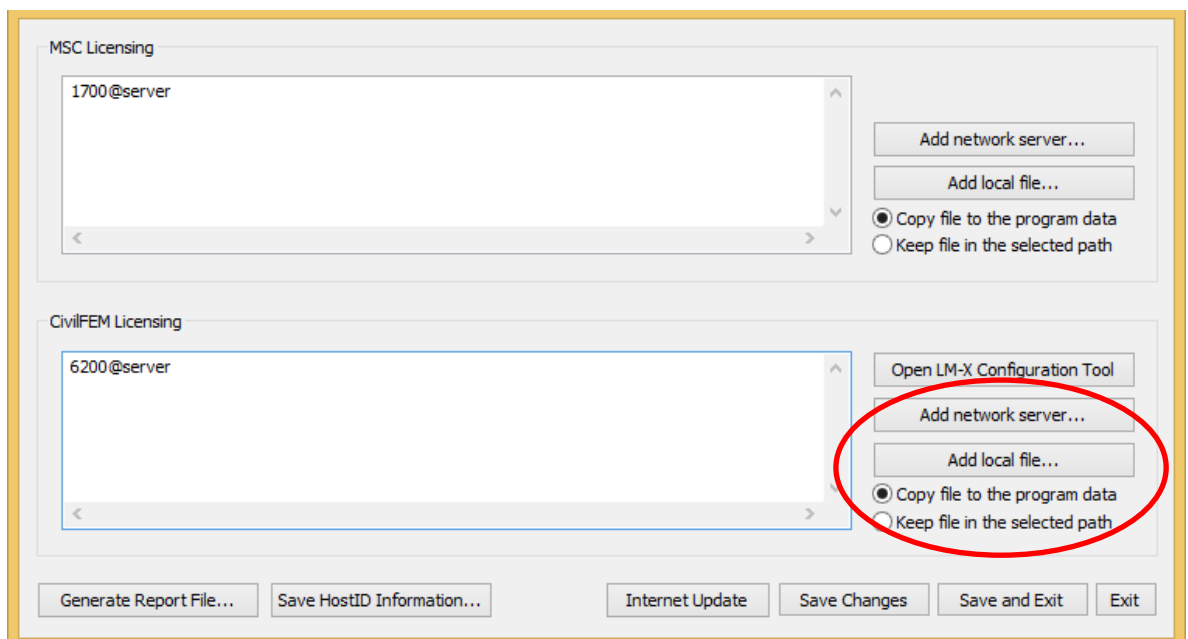
- e) **Wait** until installation progress finishes.



- f) Choose the **license configuration** option. Unless you don't want to configure the license now or you are setting-up an unattended installation, **choose the default** option to open the Administration Utility to configure the licenses:

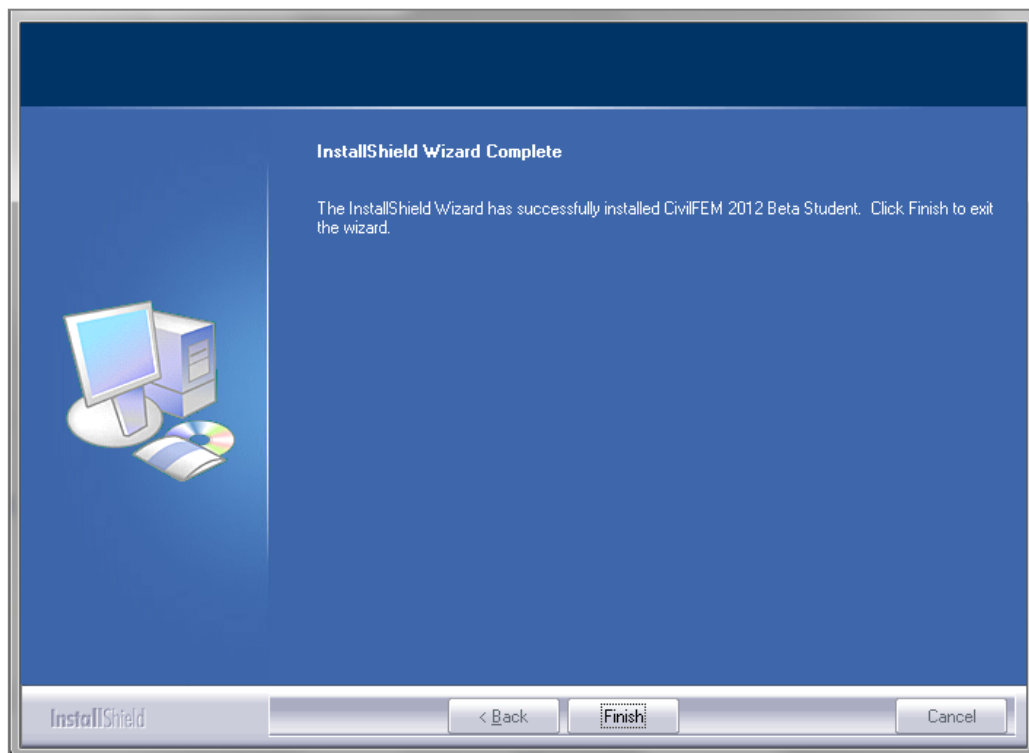


- g) The **Administration Utility** will be automatically opened in order to select a local license file or to configure the license server name. Push “Add Network Server” or “Add Local File” button, depending on the type of license you have. Select your local license file or write the name of your server, and push **Save Changes**.



When selecting a local license file, you may choose to copy the file into the program data so you don't need to keep it on the selected path.

- h) **Close the tool.**
- i) When installation is complete click ***Finish***.



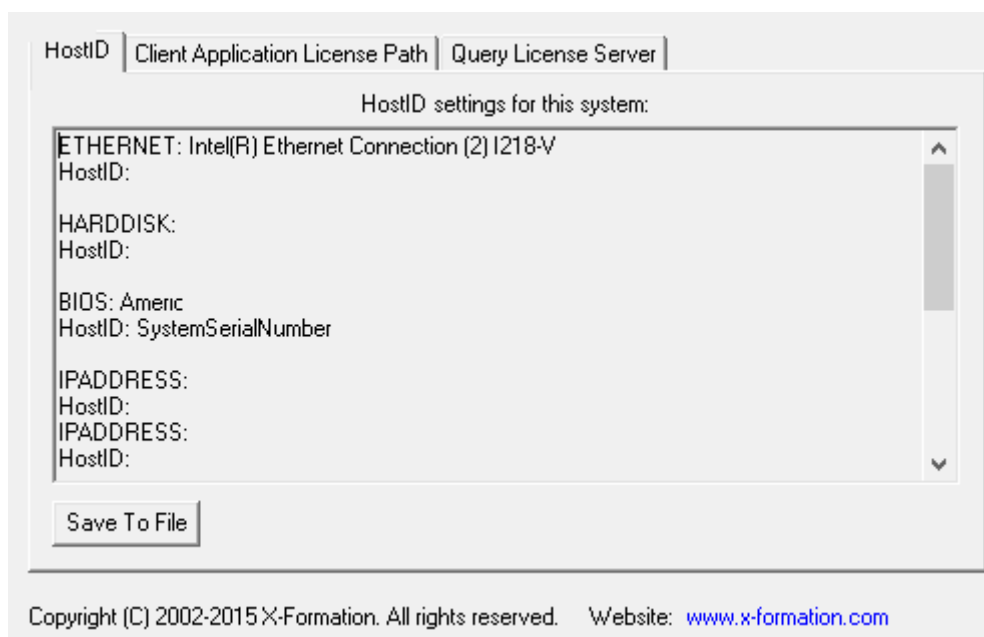
5. CivilFEM Licensing

5.1. How to Obtain Your License File

This installation is for **network licenses** only, which are **floating**. If you have a different license type, please refer to a different guide:

- For **network floating licenses**, the licenses file should be attached to a server computer and installed with the license server. Those licenses will be available for any computer of the local network that has access to the license server.

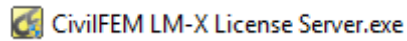
It is necessary to provide some required machine information to Ingeciber, in order to generate the license file attached to the proper computer (the local computer or the server computer, depending on the type of license). In order to provide that information to Ingeciber, please, run the **LM-X Configuration Tool**. Select the “*HostID*” tab and click on “*Save to File*”:



Once we receive at Ingeciber your HostID information file, we will generate and send you two different license “*.lic*” files: one for CivilFEM LM-X License Server and another for the MSC Licensing. Check the next two sections on how to use that license.

5.2. License Server Installation

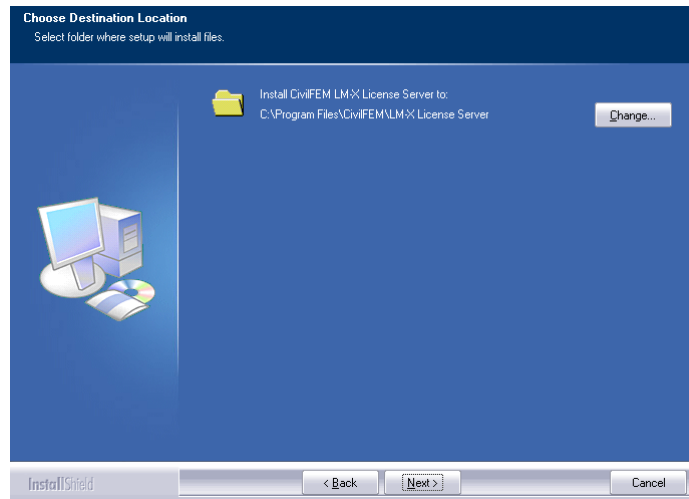
The CivilFEM LM-X License Server is required for CivilFEM **floating network licenses** to work. It is included in the Commercial installer of CivilFEM, but can also be downloaded as a stand-alone installer from the CivilFEM Customer Portal:



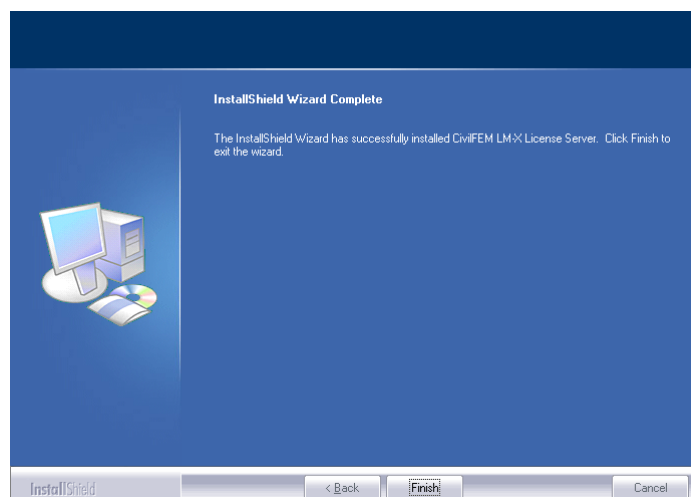
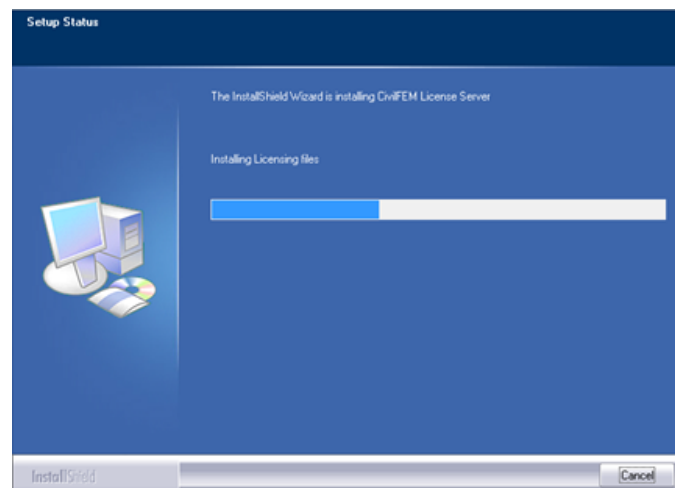
Welcome and agreement screens:



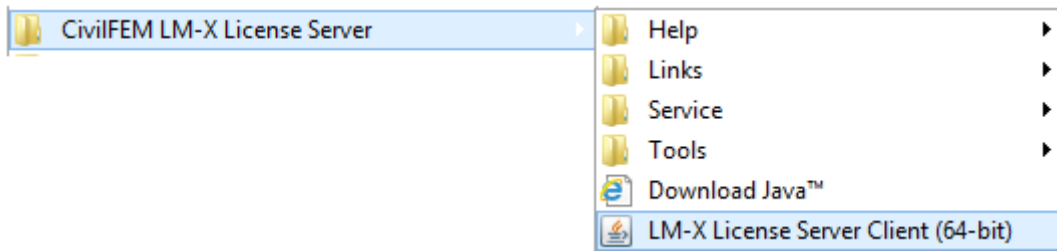
Installation directory selection:



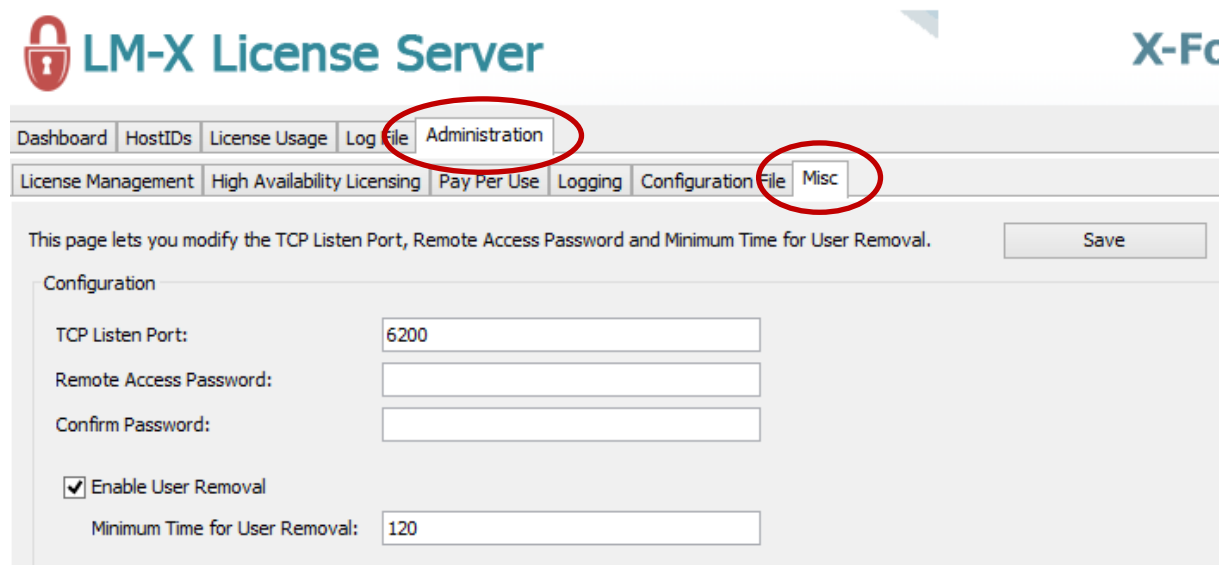
Further installation process:



After the installation of the CivilFEM License Server, some new items will be available on the **Start Menu**:



Use the **LM-X License Server Client** tool to install or update the **network license keys** (the default Admin password is: **MyPassword123**). To change the default password, select the Administration tab and Misc second level tab. Then set the new password and save (you may be asked to restart the server).



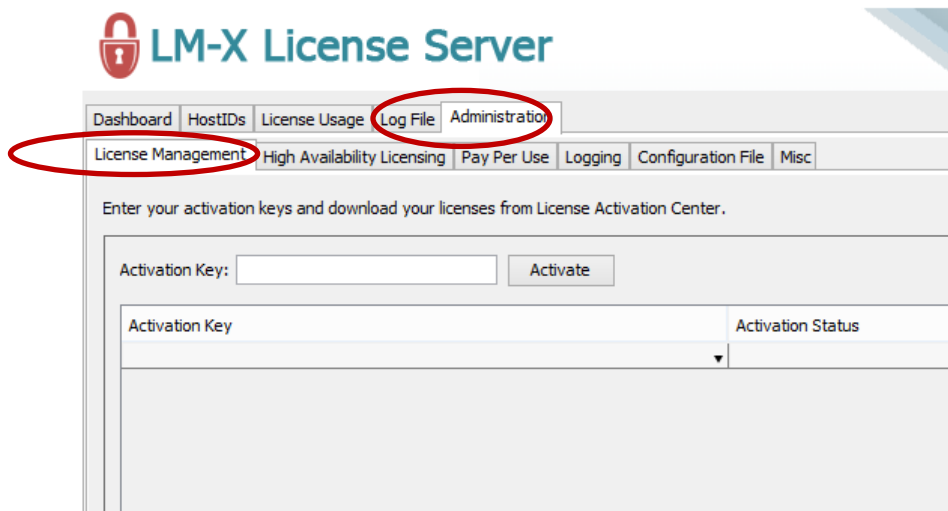
Note: The UI needs Java 8 installed.

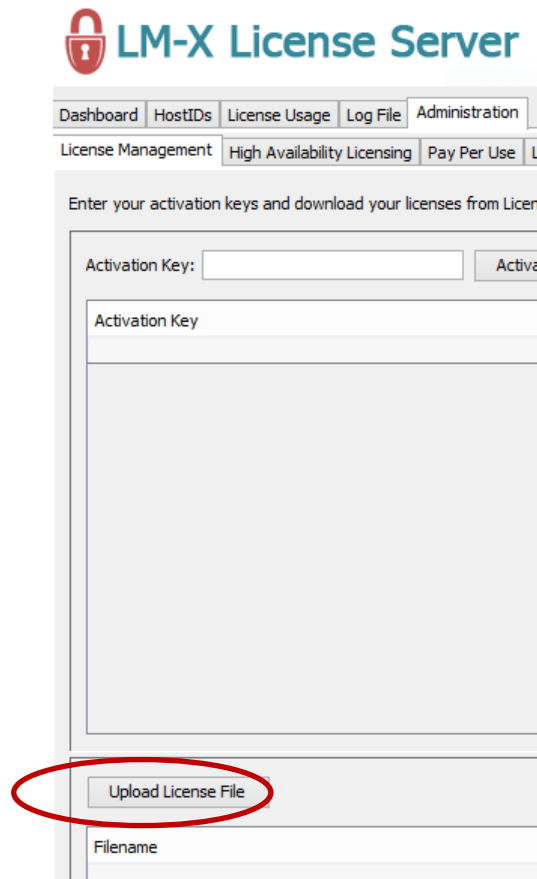
Note: LM-X Server uses port 6200 by default. This port must be open.

5.3. Floating Licenses on a License Server

The **LM-X License Server Client** is a Java-based application (requires Java to be installed), used to administer CivilFEM **floating network licenses**. It can be accessed from the Start Menu. The default administrative password is: *MyPassword123*

To add a license, select the “Administration” tab and the “License Management” secondary tab. Then click on the “**Upload License File**” button:

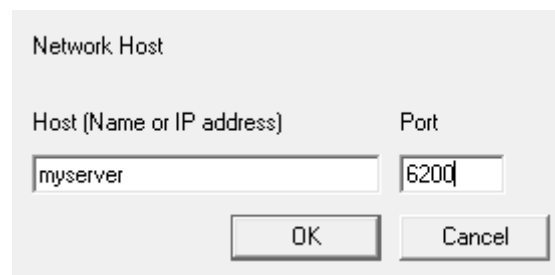
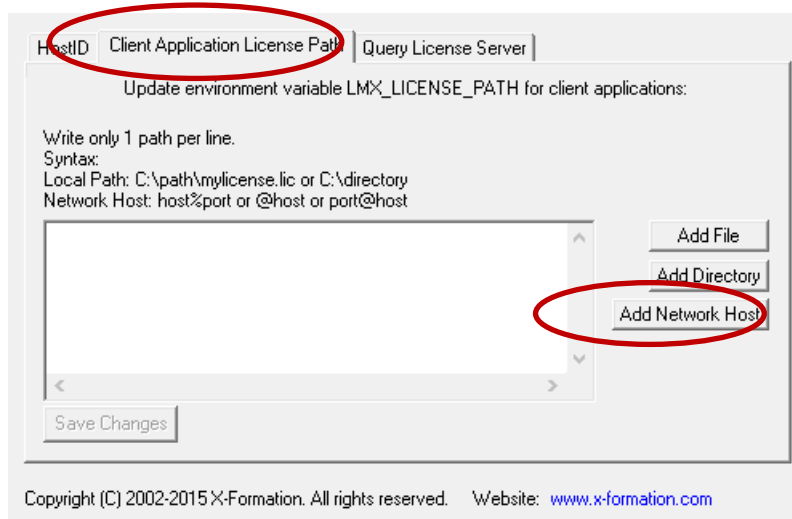




You will be asked to restart the license service (it will take a second, but users working with CivilFEM may lose their license). After doing that, you will see the available licenses by selecting the “License Usage” tab, and the “Features” option on the “View” drop down:

Feature	Version	Vendor	Start Date	Expire Date
Advanced_Addon_FreeOfCharge_until_Oct_2015	0.91	INGECIBER	2015-03-13	2015-03-16
CivilFEM_Advanced_2015_4_Cores	0.91	INGECIBER	2015-03-13	2015-03-16
CivilFEM_Advanced_2015_8_Cores	0.91	INGECIBER	2015-03-12	2015-12-31

In order to use these licenses, you may configure the client computers to use your license server. On each client computer (where you want to use CivilFEM), run the **LM-X Configuration Tool** utility, click on the “Add Network Host” button, and specify the name of your license server:



IMPORTANT NOTE: This setup process is necessary only if you acquired a floating network license and installed a **license server**.

5.4. Borrowing Licenses

IMPORTANT: Unfortunately, MSC Licenses cannot be borrowed. It is possible to work with CivilFEM by borrowing a CivilFEM License, but it is not possible to neither mesh nor solve the model without a MSC license.

Before borrowing a CivilFEM license, connect the computer to the same network of the **LM-X License Server**. After that, go to the CivilFEM's folder in the Start Menu, and run the **"Borrow License"** shortcut. CivilFEM will open a License Borrow menu:

Hours to borrow	6
Product	CivilFEM Advanced 2015 8 Cores
Advanced Addon FreeOfCharge until Oct...	<input type="checkbox"/>
[-] License Information	
License type	Commercial
Product	CivilFEM Advanced 2015 8 Cores
Expiration date	2015-12-31 23:59
Addons	No Addons used
Addons expiration dates	-
Number of elements	Unlimited
Number of beams	Unlimited
Number of Licensed CPU Cores	8

License Information
The information of the selected license

Ok Cancel

The user can specify the number of hours and the product to borrow. After clicking *Ok*, the license will be attached to that machine, and the computer may be disconnected from the network, being perfectly functional due to the borrowed license.

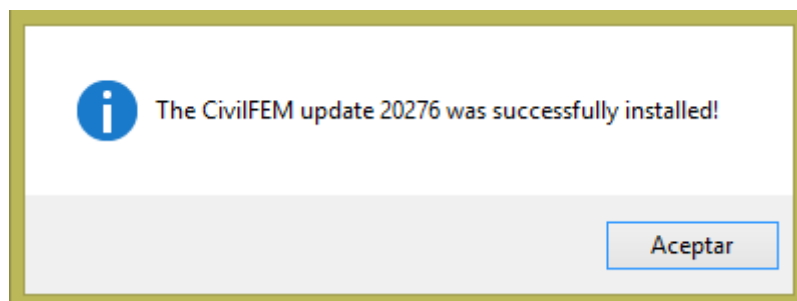
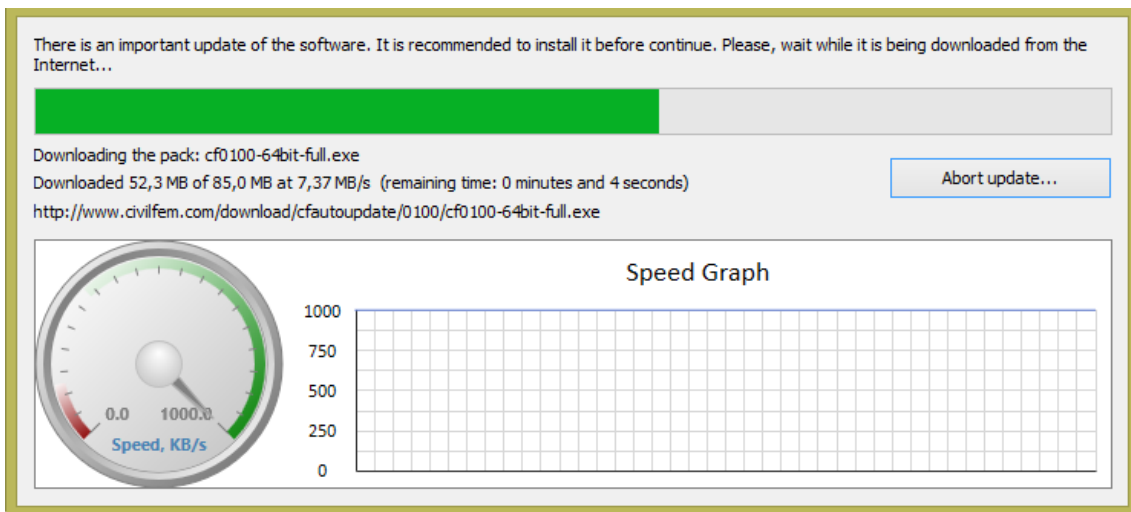
To return the borrowed license before the selected number of hours, first connect the computer to the network again. Then, go to CivilFEM's folder in the Start Menu, and run the ***"Return Borrowed License"*** shortcut.

6. Running CivilFEM

Now CivilFEM can be launched. Some configuration options must be set before calculation getting started.

6.1. Software Updates

If there is any important update and internet connection is available then it will be automatically downloaded and installed.



6.2. Selecting the License with the Product Launcher

Go to Home > Program Files > CivilFEM and open the application.

The **Product Launcher** appears when opening CivilFEM. The first time, set the product to use (these settings will be remembered by the software).

The window shows available product licenses and also **add-on** products if any. Select one main product from the drop down, then, check add-on options for extra capabilities of the

product. (The word *capability* here means the same as *features* in Admin Control Center)
Finally, click Accept to start CivilFEM.

For more information of the selected product and add-ons, expand the drop list. However, this is a reference chart and settings cannot be modified here.

Unauthorized use, distribution or duplication is prohibited.

Ingeciber S.A. Copyright. All rights Reserved.

All other trademarks are property of their respective owners.